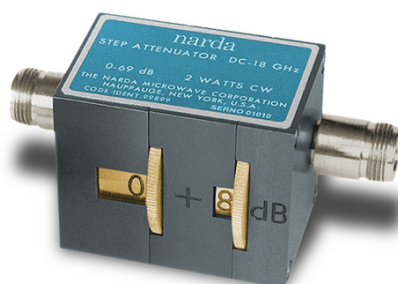


Attenuators Step

Adapters **Attenuators** Couplers DC Blocks Detectors Isolators & Circulators Phase Shifters Power Dividers and Hybrids Terminations (50 Ohm Loads) Waveguide

SMA Female DC to 18 GHz, 0 to 69 dB in 1 and 10dB Increment



Features

- Broadband DC-18 GHz
- Small Size
- Precision Construction/High Reliability
- Precision 1 and 10 dB steps, to 69 dB
- Panel Mount or Stand Alone (See note A)

Models

- 4745-69

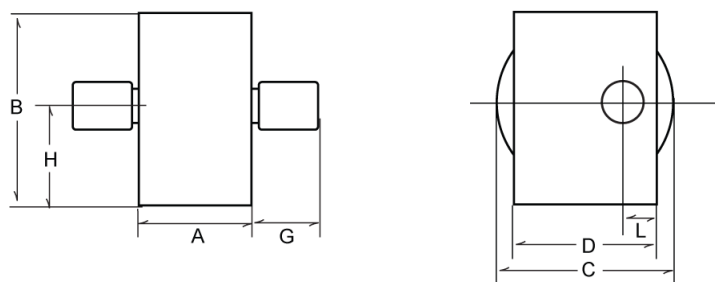
Model	4745-69
Low Frequency (GHz)	DC
High Frequency (GHz)	18.0
Attenuation Range	0-69 dB in 1 dB and 10 dB steps
Step 1 Deviation (0dB)	1.0
Steps 1-9 Deviation (1-9dB)	+/- 0.5
Step 10-19 Deviation (10-19dB)	+/- 1.0
Step 20-29 Deviation (20-29dB)	+/- 1.4
Step 30-39 Deviation (30-39dB)	+/- 1.2
Step 40-49 Deviation (40-49dB)	+/- 1.5
Step 50-59 Deviation (50-59dB)	+/- 1.9
Step 60-69 Deviation (60-69dB)	+/- 2.0
Resettability per Drum (dB)	< 0.05
VSWR (max)	1.50
Impedance (Ohms)	50
Temperature Stability (dB / dB / Deg Celcius)	0.0001
Average Power (W)	2
Power Peak (kW at duty of cycle of 0.0001)	0.2
Connector Type	Type SMA Female
Special Notes:	A , B

Special Notes:
A: A list of materials supplied, and installation instructions for rack mounting brackets for rack mounting kit (purchased separately) Part Number **43017200** appears at the end of the step attenuators section (after Model series 745 and 4745). The typical cutout for each attenuator type for the rack mount configuration appears with the outline drawings that follow.
B: Rack Mounting Kit accommodates all attenuator series housings.

Attenuators Step

Adapters **Attenuators** Couplers DC Blocks Detectors Isolators & Circulators Phase Shifters Power Dividers and Hybrids Terminations (50 Ohm Loads) Waveguide

SMA Female DC to 18 GHz, 0 to 69 dB in 1 and 10dB Increment



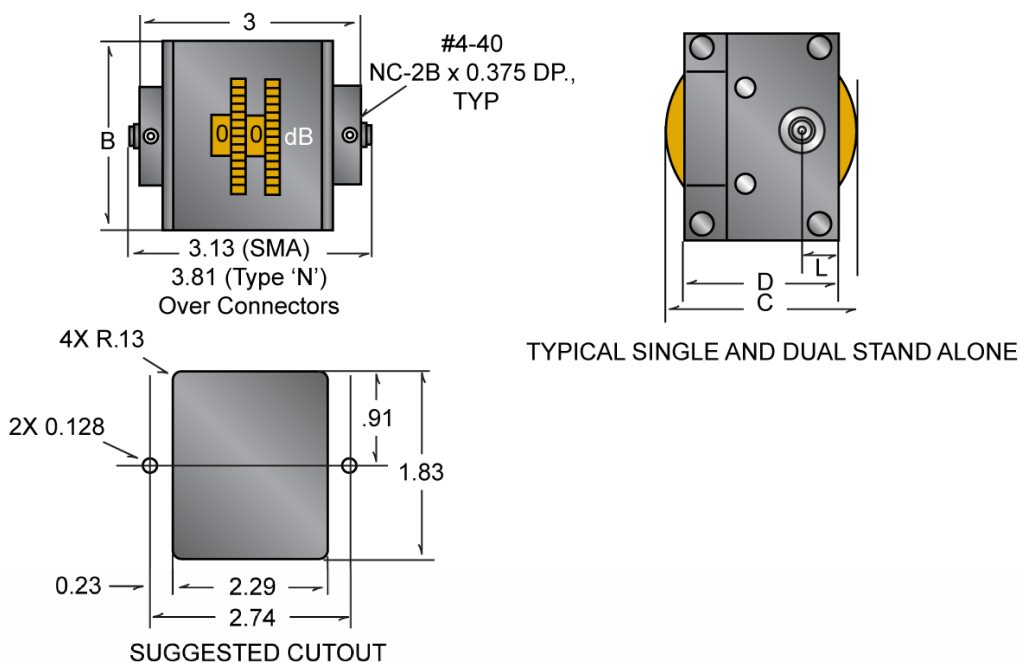
Outline Drawings For Models : 4745-69

Units	A	B	C	D	G	H	L
4745-69							
in.	2.250	1.875	1.750	1.437	0.437	0.938	0.312
mm	57.150	47.625	44.450	36.500	11.100	23.825	7.925

Notes:

Unless otherwise specified dimensions are max. and for reference only. Connectors are made without interference per MIL-STD-348. Contact the factory for detailed specifications and outline drawing.

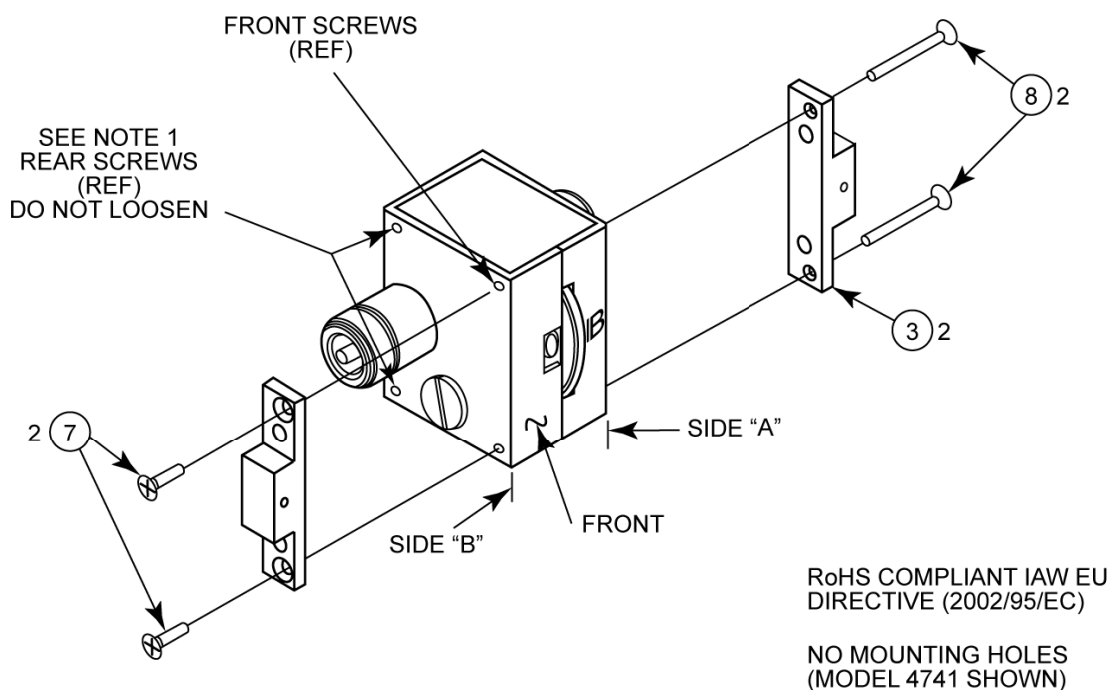
Typical Rack Mount Configurations For 745-69 and 4745-69 Thumb Wheel Step Attenuators



Unless otherwise specified dimensions are max. and for reference only.
 *Requires Mounting Kit, Part No. 43017200.

SMA Female DC to 18 GHz, 0 to 69 dB in 1 and 10dB Increment

Panel Mounting Brackets Installation FOR OLDER DEVICES WITHOUT MOUNTING HOLES



This drawing gives instructions for installation of panel mounting brackets on a model 741, 4741, 743, 4743, 745, 4745, thumbwheel turret attenuator.

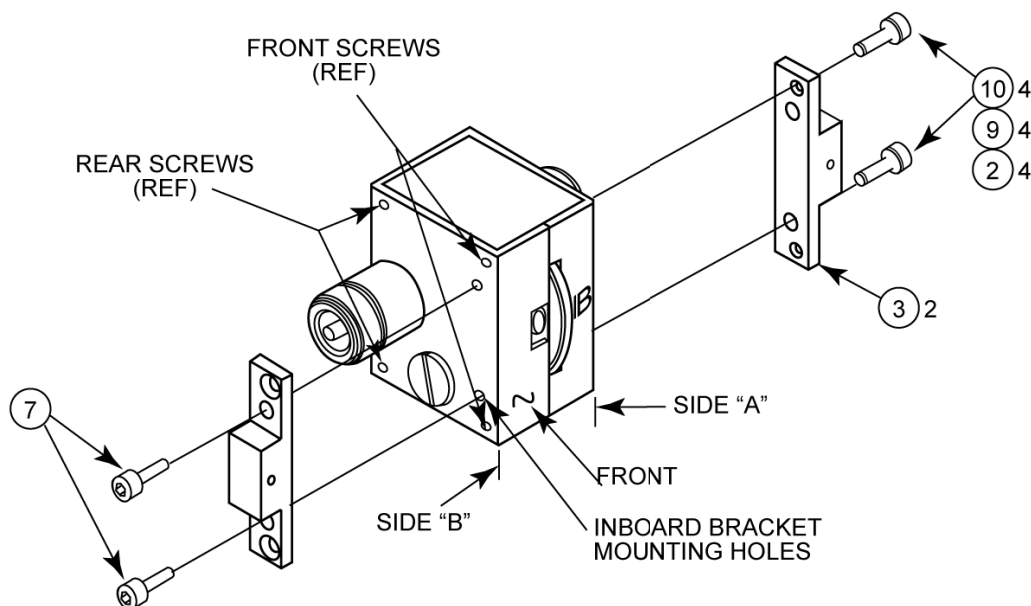
1. Working: from the front of side "A", remove the two FRONT screws, P/N 70152016.
DO NOT loosen or otherwise disturb the two rear screws.
2. Install mounting bracket, item 3 using two, item 8 flat head screw as shown on side "A".
3. Install mounting bracket, item 3 using two, item 7 flat head screws as shown on side "B".
4. Make sure mounting brackets are flush with front of unit.

Attenuators Step

Adapters **Attenuators** Couplers DC Blocks Detectors Isolators & Circulators Phase Shifters Power Dividers and Hybrids Terminations (50 Ohm Loads) Waveguide

SMA Female DC to 18 GHz, 0 to 69 dB in 1 and 10dB Increment

Panel Mounting Brackets Installation FOR NEWER DEVICES WITH MOUNTING HOLES



1. Working from the front of side "B", locate inboard bracket mounting holes.
2. Install bracket, item 3 using screw, item 9, lock washer, item number 10 and flat washer 6. carefully insert the screw assembly through the inboard/mounting holes on the bracket and into the inboard screw holes on the housing.
3. Make sure the bracket is flush with the front of the unit and tighten the screws.
4. Repeat above steps for "A" side.

List of Materials Supplied With Mounting Kit Part Number 43017200

FIND NO.	IDENT. NO.	NOMENCLATURE OR DESCRIPTION	QTY TO USE FOR MODEL(S) 741, 4741, 743 and 4743	QTY TO USE FOR MODEL(S) 745 AND 4745
10	535338136	LOCKWASHER, #6	4	4
9	70152019	SCR, SOCKET HD. #632 X 3/8 L.	4	4
8	551959020	SCR, FLAT #4-40 X 7/8 LG.	2	-
8	551959019	SCR, FLAT HD. #4-40 X 3/4 LG.	-	2
7	551959015	SCR, FLAT HD. #4-40 X 3/8 LG.	2	-
7	551959022	SCR, FLAT HD. #4-40 X 1 1/4 L.	-	2
3	42452200	BRACKET MOUNTING	2	2
2	515795805	WASHER, FLAT #6	4	4