

## E-series E9320 power sensor specifications

The E9320 peak and average power sensors are designed for use with the EPM-P series power meters. The E9320 sensors have two measurement modes:

**Normal** mode (default mode for E9320 sensors) for peak, average and time-related measurements

**Average only** mode is designed primarily for average power measurements on low-level signals. This mode is the only mode used with 8480 series sensors, E series CW sensors and E-series E9300 sensors.

The following specifications are valid after zero and calibration of the power meter.

*Note: E9320 power sensors MUST be used with an E9288A, B or C cable.*

**Table 3. Sensor specifications**

Sensor model	Video bandwidth	Frequency range	Power range		Maximum power	Connector type
			Average only mode	Normal mode <sup>1</sup>		
E9321A	300 kHz	50 MHz to 6 GHz	-65 dBm to +20 dBm	-50 dBm to +20 dBm	+23 dBm average; +30 dBm peak ( $< 10 \mu\text{sec}$ duration)	Type N (m)
E9325A		50 MHz to 18 GHz				
E9322A	1.5 MHz	50 MHz to 6 GHz	-60 dBm to +20 dBm	-45 dBm to +20 dBm		
E9326A		50 MHz to 18 GHz				
E9323A	5 MHz	50 MHz to 6 GHz	-60 dBm to +20 dBm	-40 dBm to +20 dBm		
E9327A		50 MHz to 18 GHz				

1. For average power measurements, free run acquisition.

The E9320 power sensors have two measurement ranges (lower and upper) as detailed in Table 4.

Table 4. Lower and upper measurement ranges

	E9321A/E9325A		E9322A/E9326A		E9323A/E9327A	
	Normal	Average only	Normal	Average only	Normal	Average only
Lower range (min. power)	-50 dBm	-65 dBm	-45 dBm	-60 dBm	-40 dBm	-60 dBm
Lower range (max. power)	+0.5 dBm	-17.5 dBm <sup>1</sup>	-5 dBm	-13.5 dBm <sup>1</sup>	-5 dBm	-10.5 dBm <sup>1</sup>
Lower to upper auto range point						
Upper to lower auto range point	-9.5 dBm	-18.5 dBm	-15 dBm	-14.5 dBm	-15 dBm	-11.5 dBm
Upper range (min. power)	-35 dBm	-50 dBm	-35 dBm	-45 dBm	-30 dBm	-35 dBm
Upper range (max. power)	+20 dBm	+20 dBm <sup>1</sup>	+20 dBm	+20 dBm <sup>1</sup>	+20 dBm	+20 dBm <sup>1</sup>

Table 5. Power sensor maximum SWR

Sensor model	Maximum SWR (<= 0 dBm)
E9321A, E9325A	50 MHz to 2 GHz: 1.12 2 GHz to 10 GHz: 1.16 10 GHz to 16 GHz: 1.23 16 GHz to 18 GHz: 1.28
E9322A, E9326A	50 MHz to 2 GHz: 1.12 2 GHz to 12 GHz: 1.18 12 GHz to 16 GHz: 1.21 16 GHz to 18 GHz: 1.27
E9323A, E9327A	50 MHz to 2 GHz: 1.14 2 GHz to 16 GHz: 1.22 16 GHz to 18 GHz: 1.26

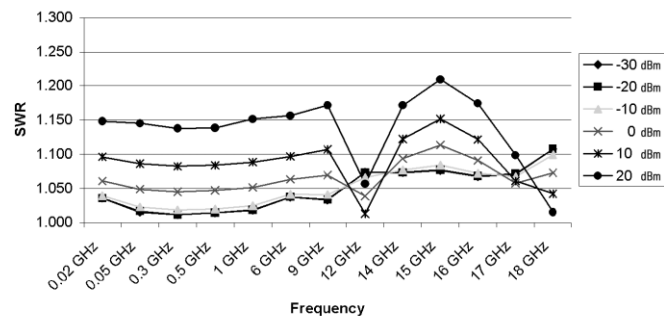


Figure 2. Typical SWR for the E9322A and E9326A sensors at various power levels

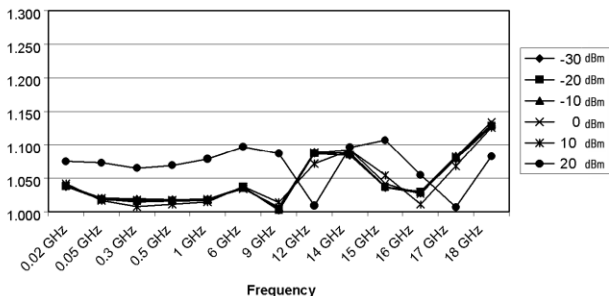


Figure 1. Typical SWR for the E9321A and E9325A sensors at various power levels

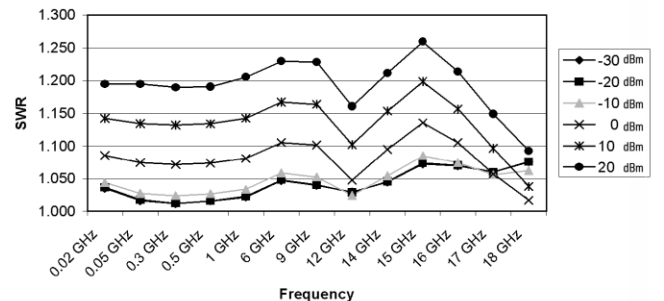


Figure 3. Typical SWR for the E9323A and E9327A sensors at various power levels

1. Applies to CW and constant amplitude signals only above -20 dBm.

## Sensor linearity

**Table 6a. Power sensor linearity, normal mode (upper and lower range).**

Sensor model	Temperature ( 25 ± 10 °C)	Temperature (0 to 55 °C)
E9321A and E9325A	±4.2%	±5.0%
E9322A and E9326A	±4.2%	±5.0%
E9323A and E9327A	±4.2%	±5.5 %

**Table 6b. Power sensor linearity, average only mode (upper and lower range).**

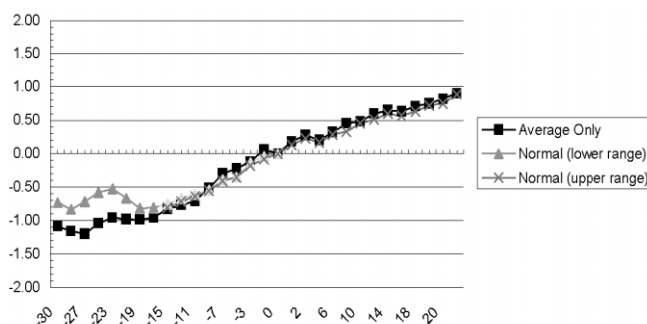
Sensor model	Temperature ( 25 ± 10 °C)	Temperature (0 to 55 °C)
E9321A and E9325A	±3.7%	±4.5%
E9322A and E9326A	±3.7%	±4.5%
E9323A and E9327A	±3.7%	±5.0 %

If the sensor temperature changes after calibration, and the meter and sensor is not re-calibrated, then the following additional linearity errors should be added to the linearity figures in Tables 6a and 6b.

**Table 6c. Additional linearity error (normal and average only modes).**

Sensor model	Temperature ( 25 ± 10 °C)	Temperature (0 to 55 °C)
E9321A and E9325A	±1.0%	±1.0%
E9322A and E9326A	±1.0%	±1.5%
E9323A and E9327A	±1.0%	±2.0 %

**Figure 4. Typical power linearity at 25 °C for the E9323A and E9327A 5 MHz bandwidth sensors, after zero and calibration, with associated measurement uncertainty.**



Power range	-30 to -20 dBm	-20 to -10 dBm	-10 to 0 dBm	0 to +10 dBm	+10 to +20 dBm
Measurement uncertainty	±0.9%	±0.8%	±0.65%	±0.55%	±0.45%

**Figure 5. Relative mode power measurement linearity with an EPM-P series power meter, at 25 °C (typical).**

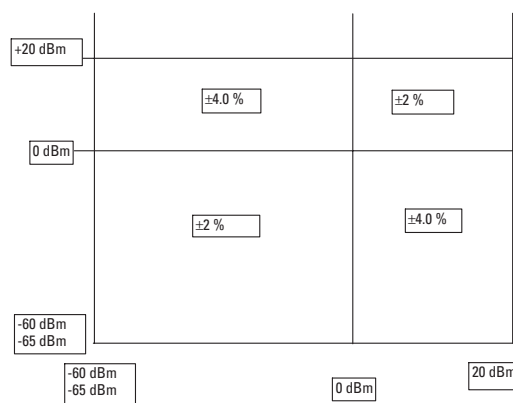


Figure 5 shows the typical uncertainty in making a relative power measurement, using the same power meter channel and the same power sensor to obtain the reference and the measured values. It also assumes that negligible change in frequency and mismatch error occurs when transitioning from the power level used as the reference to the power level measured.

## Peak flatness

The peak flatness is the flatness of a peak-to-average ratio measurement for various tone-separations for an equal magnitude two-tone RF input. Figures 6, 7 and 8 refer to the relative error in peak-to-average measurement as the tone separation is varied. The measurements were performed at -10 dBm average power using an E9288A sensor cable (1.5 m).

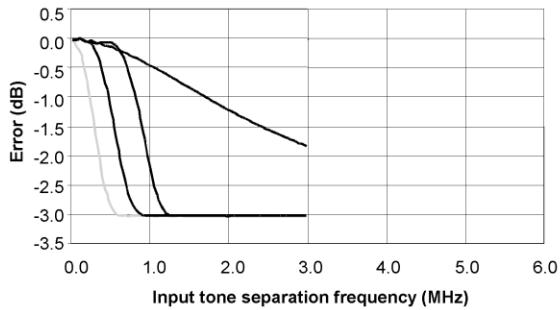


Figure 6. E9321A and E9325A Error in peak-to-average measurements for a two-tone input (high, medium, low and off filters).

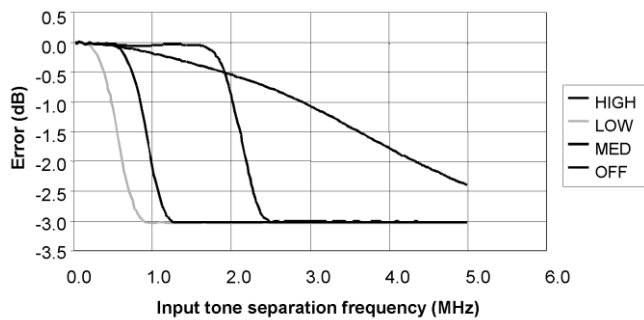


Figure 7. E9322A and E9326A error in peak-to-average measurements for a two-tone input (high, medium, low and off filters).

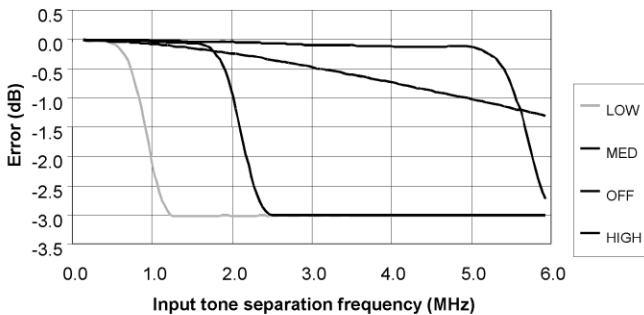


Figure 8. E9323A and E9327A error in peak-to-average measurements for a two-tone input (high, medium, low and off filters).

## Calibration Factor (CF) and Reflection Coefficient (Rho)

Calibration Factor and Reflection Coefficient data are provided at frequency intervals on a data sheet included with the power sensor. This data is unique to each sensor. If you have more than one sensor, match the serial number on the data sheet with the serial number of the power sensor you are using. The CF corrects for the frequency response of the sensor. The EPM-P series power meter automatically reads the CF data stored in the sensor and uses it to make corrections.

For power levels greater than 0 dBm, add to the calibration factor uncertainty specification:

- ±0.1%/dB (for E9321A and E9325A sensors),
- ±0.15%/dB (for E9322A and E9326A sensors) and
- ±0.2%/dB (for E9323A and E9327A sensors).

Reflection Coefficient (Rho) relates to the SWR according to the formula:

$$SWR = (1 + \text{Rho}) / (1 - \text{Rho})$$

Maximum uncertainties of the CF data are listed in Table 7. The uncertainty analysis for the calibration of the sensors was done in accordance with the ISO Guide. The uncertainty data, reported on the calibration certificate, is the expanded uncertainty with a 95% confidence level and a coverage factor of 2.

Table 7. Calibration factor uncertainty at 0.1 mW (-10 dBm).

Frequency	Uncertainty (%) (25 ±10°C)	Uncertainty (%) (0 to 55°C)
50 MHz	Reference	Reference
100 MHz	±1.8	±2.0
300 MHz	±1.8	±2.0
500 MHz	±1.8	±2.0
800 MHz	±1.8	±2.0
1.0 GHz	±2.1	±2.3
1.2 GHz	±2.1	±2.3
1.5 GHz	±2.1	±2.3
2.0 GHz	±2.1	±2.3
3.0 GHz	±2.1	±2.3
4.0 GHz	±2.1	±2.3
5.0 GHz	±2.1	±2.3
6.0 GHz	±2.1	±2.3
7.0 GHz	±2.3	±2.5
8.0 GHz	±2.3	±2.5
9.0 GHz	±2.3	±2.5
10.0 GHz	±2.3	±2.5
11.0 GHz	±2.3	±2.5
12.0 GHz	±2.3	±2.5
12.4 GHz	±2.3	±2.5
13.0 GHz	±2.3	±2.5
14.0 GHz	±2.5	±2.8
15.0 GHz	±2.5	±2.8
16.0 GHz	±2.5	±2.8
17.0 GHz	±2.5	±2.8
18.0 GHz	±2.5	±2.8

## Zero set

This specification applies to a ZERO performed when the sensor input is not connected to the POWER REF.

**Table 8. Zero set**

Sensor model	Zero set (normal mode)	Zero set (average only mode)
E9321A, E9325A	5 nW	0.17 nW
E9322A, E9326A	19 nW	0.5 nW
E9323A, E9327A	60 nW	0.6 nW

## Zero drift and measurement noise

**Table 9. Zero drift and measurement noise.**

Sensor model	Zero drift <sup>1</sup>		Measurement noise <sup>2</sup>		
	Normal mode	Average only mode	Normal mode <sup>3</sup>	Normal mode <sup>4</sup>	Average only mode
E9321A E9325A	< ±5 nW	< ±60 pW	< 6 nW	< 75 nW	< 165 pW
E9322A E9326A	< ±5 nW	< ±100 pW	< 12 nW	< 180 nW	< 330 pW
E9323A E9327A	< ±40 nW	< ±100 pW	< 25 nW	< 550 nW	< 400 pW

**Effect of averaging on noise:** Averaging over 1 to 1024 readings is available for reducing noise. Table 9 provides the measurement noise for a particular sensor. Use the noise multipliers in Table 10, for the appropriate speed (normal or x 2) or measurement mode (normal or average only) and the number of averages, to determine the total measurement noise value.

In addition, for x 2 speed (in normal mode) the total measurement noise should be multiplied by **1.2**, and for fast speed (in normal mode), the multiplier is **3.4**.

*Note that in fast speed, no additional averaging is implemented.*

**Table 10. Noise multipliers**

Mode	Number of averages	1	2	4	8	16	32	64	128	256	512	1024
Average-only	Noise multiplier (normal speed)	5.5	3.89	2.75	1.94	1.0	0.85	0.61	0.49	0.34	0.24	0.17
	Noise multiplier (x 2 speed)	6.5	4.6	3.25	2.3	1.63	1.0	0.72	0.57	0.41	0.29	0.2
Normal	Noise multiplier (normal speed; free run acquisition)	1.0	0.94	0.88	0.82	0.76	0.70	0.64	0.58	0.52	0.46	0.40

1. Within 1 hour after zero set, at a constant temperature, after a 24 hour warm-up of the power meter.
2. Measured over a one-minute interval, at a constant temperature, two standard deviations, with averaging set to 1 (for normal mode), 16 (for average only mode, normal speed) and 32 (for average only mode, x 2 speed).
3. In free run acquisition mode.
4. Noise per sample, video bandwidth set to OFF with no averaging (i.e. averaging set to 1) - see the note "Effect of Video Bandwidth Setting" and Table 11.

Example:

E9321A power sensor, number of averages = 4, free run acquisition, normal mode, x 2 speed.

Measurement noise calculation:

$$(< 6 \text{ nW} \times 0.88 \times 1.2) = < 6.34 \text{ nW}$$

**Effect of video bandwidth setting:** The noise per sample is reduced by applying the meter video bandwidth reduction filter setting (High, Medium or Low). If averaging is implemented, this will dominate any effect of changing the video bandwidth.

**Table 11. Effect of video bandwidth on noise per sample.**

Sensor	Noise multipliers		
	Low	Medium	High
E9321A E9325A	0.32	0.50	0.63
E9322A E9326A	0.50	0.63	0.80
E9323A E9327A	0.40	0.63	1.0

Example:

E9322A power sensor, triggered acquisition, video bandwidth = High.

Noise per sample calculation:

$$(< 180 \text{ nW} \times 0.80) = < 144 \text{ nW}$$

## Effect of time-gating on measurement noise

The measurement noise will depend on the time gate length, over which measurements are made. Effectively 20 averages are carried out every 1 us of gate length.

# Settling times

## Average-only mode:

In normal and x 2 speed, manual filter, 10 dB decreasing power step refer to Table 12.

**Table 12. Settling time (average only mode)**

Number of average	1	2	4	8	16	32	64	128	256	512	1024
Settling time(s) normal	0.08	0.13	0.24	0.45	1.1	1.9	3.5	6.7	14	27	57
Settling time(s) x 2	0.07	0.09	0.15	0.24	0.45	1.1	1.9	3.5	6.7	14	27

In fast speed, within the range -50 to +20 dBm, for a 10 dB decreasing power step, the settling time is 10 ms (for the E4416A) and 20 ms (for the E4417A).

When a power step crosses the power sensor's auto-range switch point, add 25 ms.

## Normal mode:

In normal, free run acquisition mode, within the range -20 to +20 dBm, for a 10 dB decreasing power step, the settling time is dominated by the measurement update rate and is listed in Table 13 for various filter settings.

**Table 13. Settling time (normal mode)**

Number of averages	1	2	4	8	16	32	64	128	256	512	1024
Settling time free run acquisition, normal speed (s)	0.1	0.15	0.25	0.45	0.9	1.7	3.3	6.5	13.0	25.8	51.5
Settling time free run acquisition, X2 speed (s)	0.08	0.1	0.15	0.25	0.45	0.9	1.7	3.3	6.5	13.0	25.8

**Table 14. Rise and fall times versus sensor bandwidth<sup>1</sup>**

In normal mode, measuring in continuous or single acquisition mode, the performance of rise times, fall times and 99% settled results are shown in Table 14. Rise time and fall time specifications are for a 0.0 dBm pulse, with the rise time and fall time measured between 10% to 90% points and upper range selected.

Sensor model	Parameter	Video bandwidth setting			
		Low	Medium	High	Off
E9321A, E9325A	Rise time (< μs)	2.6	1.5	0.9	0.3
	Fall time (< μs)	2.7	1.5	0.9	0.5
	Settling Time (rising) (< μs)	5.1	5.1	4.5	0.6
	Settling Time (falling) (< μs)	5.1	5.1	4.5	0.9
E9322A, E9326A	Rise time (< μs)	1.5	0.9	0.4	0.2
	Fall time (< μs)	1.5	0.9	0.4	0.3
	Settling Time (rising) (< μs)	5.3	4.5	3.5	0.5
	Settling Time (falling) (< μs)	5.3	4.5	3.5	0.9
E9323A, E9327A	Rise time (< μs)	0.9	0.4	0.2	0.2
	Fall time (< μs)	0.9	0.4	0.2	0.2
	Settling Time (rising) (< μs)	4.5	3.5	1.5	0.4
	Settling Time (falling) (< μs)	4.5	3.5	2	0.4

Overshoot in response to power steps with fast rise times, i.e. less than the sensor rise time, is < 10%. When a power step crosses the power sensor's auto-range switch point, add 10 μs.

1. Rise and fall time specifications are only valid when used with the E9288A sensor cable (1.5 meters).

## Physical specifications

**Dimensions:** 150 mm L x 33 mm W x 30 mm H  
(5.9 in x 1.5 in x 1.2 in)  
**Weight:** Net: 0.2 kg (0.45 lbs)  
Shipping: 0.55 kg (1.2 lbs)

## Ordering information

<b>E9321A</b>	50 MHz to 6 GHz; 300 kHz BW
<b>E9322A</b>	50 MHz to 6 GHz; 1.5 MHz BW
<b>E9323A</b>	50 MHz to 6 GHz; 5 MHz BW
<b>E9325A</b>	50 MHz to 18 GHz; 300 kHz BW
<b>E9326A</b>	50 MHz to 18 GHz; 1.5 MHz BW
<b>E9327A</b>	50 MHz to 18 GHz; 5 MHz BW

## Accessories supplied

Operating and Service Guide (multi-language)  
ANSI/NCSL Z540-1-1994 Certificate of Calibration  
supplied as standard

## Power sensor options

<b>E932xA-A6J</b>	Supplies ANSI/NCSL Z540-1-1994 test data including measurement uncertainties
<b>E932xA-0B1</b>	Add manual set

### Agilent Technologies' Test and Measurement Support, Services, and Assistance

Agilent Technologies aims to maximize the value you receive, while minimizing your risk and problems. We strive to ensure that you get the test and measurement capabilities you paid for and obtain the support you need. Our extensive support resources and services can help you choose the right Agilent products for your applications and apply them successfully. Every instrument and system we sell has a global warranty. Support is available for at least five years beyond the production life of the product. Two concepts underlie Agilent's overall support policy: "Our Promise" and "Your Advantage."

#### Our Promise

Our Promise means your Agilent test and measurement equipment will meet its advertised performance and functionality. When you are choosing new equipment, we will help you with product information, including realistic performance specifications and practical recommendations from experienced test engineers. When you use Agilent equipment, we can verify that it works properly, help with product operation, and provide basic measurement assistance for the use of specified capabilities, at no extra cost upon request. Many self-help tools are available.

#### Your Advantage

Your Advantage means that Agilent offers a wide range of additional expert test and measurement services, which you can purchase according to your unique technical and business needs. Solve problems efficiently and gain a competitive edge by contracting with us for calibration, extra-cost upgrades, out-of-warranty repairs, and onsite education and training, as well as design, system integration, project management, and other professional engineering services. Experienced Agilent engineers and technicians worldwide can help you maximize your productivity, optimize the return on investment of your Agilent instruments and systems, and obtain dependable measurement accuracy for the life of those products.



## Agilent Email Updates

**[www.agilent.com/find/emailupdates](http://www.agilent.com/find/emailupdates)**

Get the latest information on the products and applications you select.

### Agilent T&M Software and Connectivity

Agilent's Test and Measurement software and connectivity products, solutions and developer network allows you to take time out of connecting your instruments to your computer with tools based on PC standards, so you can focus on your tasks, not on your connections. Visit **[www.agilent.com/find/connectivity](http://www.agilent.com/find/connectivity)** for more information.

**By internet, phone, or fax, get assistance with all your test & measurement needs**

#### Phone or Fax

##### United States:

(tel) 800 452 4844

##### Canada:

(tel) 877 894 4414

(fax) 905 282 6495

##### China:

(tel) 800 810 0189

(fax) 800 820 2816

##### Europe:

(tel) (31 20) 547 2323

(fax) (31 20) 547 2390

##### Japan:

(tel) (81) 426 56 7832

(fax) (81) 426 56 7840

##### Korea:

(tel) (82 2) 2004 5004

(fax) (82 2) 2004 5115

##### Latin America:

(tel) (305) 269 7500

(fax) (305) 269 7599

##### Taiwan:

(tel) 0800 047 866

(fax) 0800 286 331

##### Other Asia Pacific Countries:

(tel) (65) 6375 8100

(fax) (65) 6836 0252

Email: [tm\\_asia@agilent.com](mailto:tm_asia@agilent.com)

#### Online Assistance:

**[www.agilent.com/find/assist](http://www.agilent.com/find/assist)**

Product specifications and descriptions in this document subject to change without notice.

© Agilent Technologies, Inc. 2002, 2003, 2004

Printed in USA, February 1, 2004

5980-1469E



**Agilent Technologies**