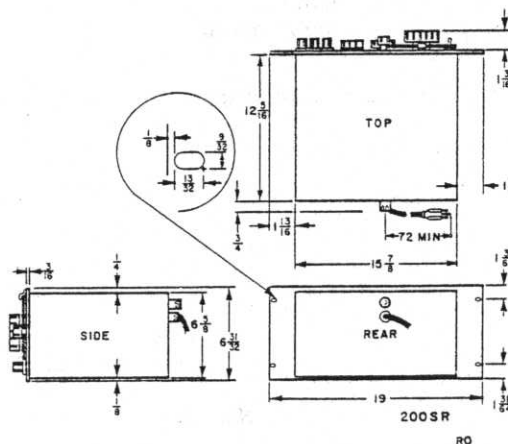


## SPECIFICATIONS

FREQUENCY RANGE:	5 cps to 600 kc in 5 ranges.
DIAL ACCURACY:	$\pm 2\%$ .
FREQUENCY RESPONSE:	$\pm 1$ db, 1000 cps reference.
MAXIMUM OUTPUT:	3 V rms into 50 ohms.
ATTENUATOR:	Approximately 10 db range.
DISTORTION:	Less than 0.5% below 500 kc; less than 1% above 500 kc.
HUM VOLTAGE:	Less than 0.1% of rated output.
POWER:	115/230 volt, $\pm 10\%$ , 50-1000 cps, 75 watts.
ACCESSORIES AVAILABLE:	<p>Ⓢ11000A Cable Assembly, terminated by dual banana plugs.</p> <p>Ⓢ11001A Cable Assembly, as above, but with one BNC connector.</p>
DIMENSIONS:	<p>Cabinet Mount: 7-1/2" wide, 11-1/2" high, 14-1/4" deep.</p> <p>Rack Mount:</p>



WEIGHT:	Cabinet Mount:	Net 23 lbs., shipping 29 lbs.
	Rack Mount:	Net 27 lbs., shipping 35 lbs.