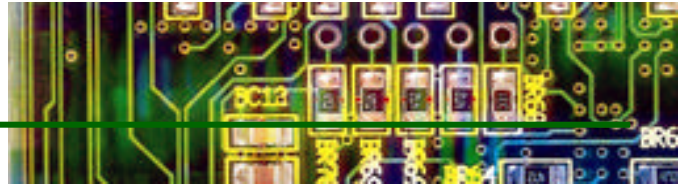


# DALE LT544D<sup>LITE</sup>

## Digital Safety Tester



### Product Highlights

This device is designed to perform simple safety tests on any type of electrical medical equipment, when patient lead testing is not required.

The rugged hand-held instrument is built for quick and easy use. A simple selector knob controls the functions, Leakage Current or Chassis Resistance. Accurate test measurements are shown on the large display.

Heavy-duty switches change polarity, open and close the neutral and select Chassis or Earth Leakage Current measurements. A four-wire Kelvin bridge eliminates resistance reading errors due to cable length and contact resistance. True RMS measurements are provided for all current readings. The AAMI test load is utilized.



### Features

- Small, lightweight, self-contained portable instrument
- Universal Power Supply. Input voltage from 85 - 265 VAC
- Chassis Resistance measurements are made with a four-wire Kelvin bridge to eliminate errors due to cable length
- True RMS measurements of all leakage current readings
- Test method complies with ANSI/AAMI ES1-1993
- Leakage Current can be measured in Open/Closed Neutral, Normal/Reversed Polarity and Open/Closed Ground
- All Leakage Current measurements are displayed directly in  $\mu$ Amps



BC Group International, Inc.  
9415 Gentry Avenue  
St. Louis, MO 63125  
314-638-3800  
314-638-3200 Fax  
1-888-223-6763

**BC Group**   
[www.bcgrouppintl.com](http://www.bcgrouppintl.com)

# SPECIFICATIONS

## DALE LT544D<sup>LITE</sup>

Function	Unit	Range	Resolution	Accuracy $\pm 1$ count
Ground Resistance	Ohms	0- 1.99 2-19.99	10 mohms	1% R $\pm 1$ LSD 2% R $\pm 1$ LSD
Leakage Current	$\mu$ Amps	0-1999	1 $\mu$ Amp	1% R $\pm 1$ LSD
Controls		1. Function Switch (2 position rotary) 2. Neutral Switch (Closed/Open) 3. Polarity Switch (Normal/Off/Reversed) 4. Leakage Switch (Chassis/Earth)		
Power		85 - 265 VAC, 16 A @ 120 V, 10 A @ 230 V		
Physical Size	Inch (mm)	3.5 x 6.2 x 1.6 (90 x 180 x 38)		



BC Group International, Inc.  
 9415 Gentry Avenue  
 St. Louis, MO 63125  
 314-638-3800  
 314-638-3200 Fax  
 1-888-223-6763  
[www.bcgrouintl.com](http://www.bcgrouintl.com)