

Waveguide Terminations

7.05-26.5

HIGH POWER WAVEGUIDE TERMINATIONS (Dummy Loads)

- Exceptional Power Capacity
- Superior Match, Low VSWR



SPECIFICATIONS

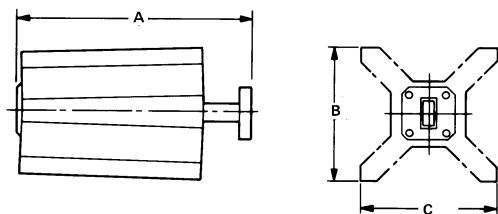
FREQUENCY RANGE (GHz)	MODEL**	WAVEGUIDE SIZE	FLANGE Equivalent To	POWER* Average Watts	Peak kW	VSWR (Max)	WEIGHT Pounds Kg (Max)	
7.05-10	321B	WR-112	UG-138/U	600	460	1.10	0.8	0.37
8.2-12.4	320B	WR-90	UG-135/U	500	290	1.15	1.6	0.73
12.4-18	319B	WR-62	UG-419/U	250	160	1.15	0.5	0.23
18-26.5	318C	WR-42	UG597/U	300	40	1.15	2.0	0.91

* Termination mounted vertically for free air, unobstructed convection at standard temperature and pressure.

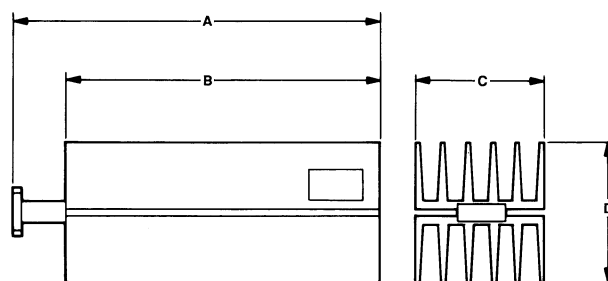
** **IMPORTANT NOTE:** Models 321B, 320B and 319B can be pressurized for high peak power capacity.
Model 318C is **NOT** pressure-tight.

Waveguide Terminations

OUTLINE DRAWINGS



MODEL	A MAX	B MAX	C MAX
319B	4.37 (110.9)	2.45 (62.2)	2.45 (62.2)
320B	5.75 (146.0)	2.75 (69.8)	2.75 (69.8)
321B	6.50 (165.1)	3.25 (82.5)	2.52 (64.0)



MODEL	A ±.03	B MAX	C ±.03	D ±.03
318C	6.25 (158.75)	5.05 (128.27)	2.31 (58.67)	3.20 (81.28)

Dimensions in parentheses are in millimeters and for reference only.

All dimensions Max. unless otherwise specified.